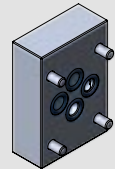
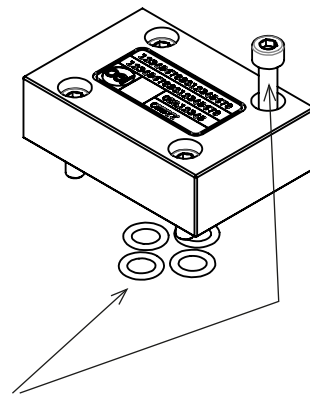
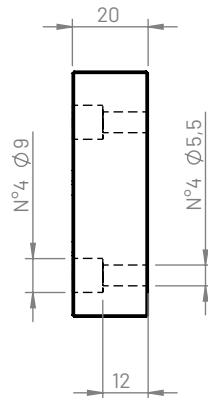
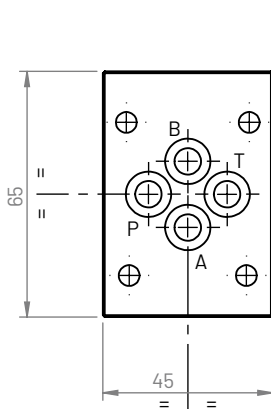


Modello **307**  
Tipo CBS307\*-\*

Base singola di chiusura e  
collegamento P-T-A-B

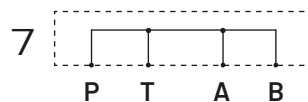
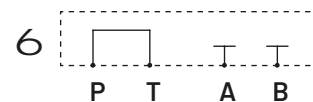
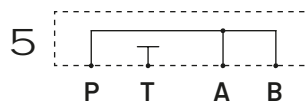
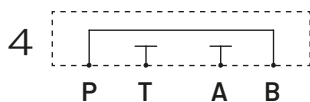
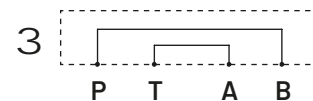
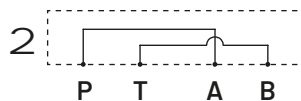
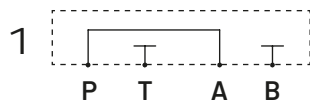


1. 11



La base singola viene fornita completa di:  
- n°4 viti M5x20 UNI5931  
- n°4 O-Ring 108 (8,73x1,78) NBR90

**Schemi idraulici**



**Esempio di ordinazione**

**CBS 3 07 \* - \***

Base singola: **CBS**

Figura CETOP: **3**

Tipo schema: **07**

Materiale:

**G** (ghisa GJL250 FOSFATATA)

**A** (alluminio EN AW-6026 LF NON anodizzata)

**B** (alluminio EN AW-6026 LF anodizzata BIANCO)

**Altri materiali e trattamenti a richiesta**

**Peso**

Alluminio (kg)	Ghisa (kg)
0,15	0,41

Collegamento:

- 1 (P in A, T-B chiusi)
- 2 (P in A, T in B)
- 3 (P in B, T in A)
- 4 (P in B, T-A chiusi)
- 5 (P in A-B, T chiuso)
- 6 (P in T, A-B chiusi)
- 7 (P in T-A-B)