

CETOP3 - NG6

Base singola intermedia con utilizzi
P-T-A-B 1/4"G o 3/8"G

Modello

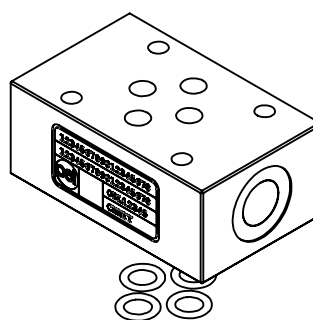
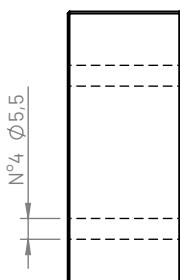
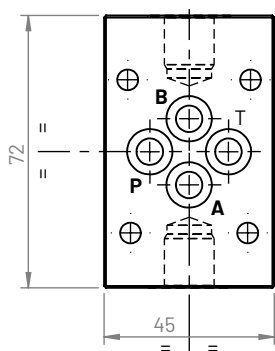
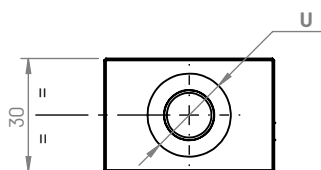
308

Tipo

CBS308*-*-*

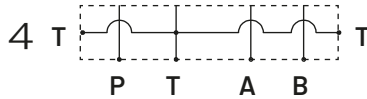
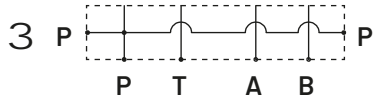
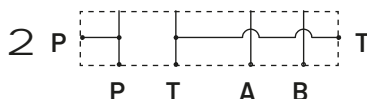
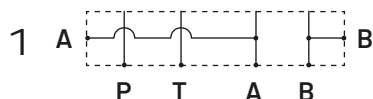
**BASE
SINGOLA**

1. 12



La base singola viene fornita completa di:
- n°4 O-Ring 108 (8,73x1,78) NBR90

Schemi idraulici



Peso

Alluminio (kg)	Ghisa (kg)
0,24	0,66

Esempio di ordinazione

CBS 3 08 * - * - *

Base singola: **CBS**

Figura CETOP: **3**

Tipo schema: **08**

Materiale:

G (ghisa GJL250 FOSFATATA)

A (alluminio EN AW-6026 LF NON anodizzata)

B (alluminio EN AW-6026 LF anodizzata BIANCO)

Altri materiali e trattamenti a richiesta

Collegamento:

1 (A-B)

2 (P-T)

3 (P-P)

4 (T-T)

Dimensione utilizzi:

0 (1/4"G)

2 (3/8"G)