

Base singola intermedia CETOP5  
con filettature M10x1 su P-T-A-B

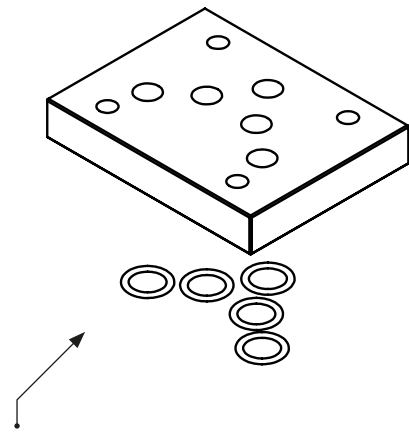
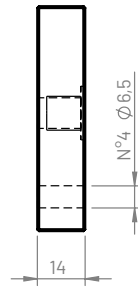
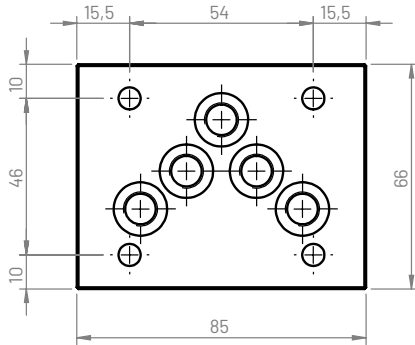
Modello  
Tipo

CETOP5 - NG10

509  
CBS509\*

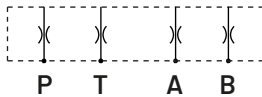
BASE  
SINGOLA

4.17



La base singola viene fornita completa di:  
- n°5 O-Ring 2050 (12,42x1,78) NBR90

#### Schema idraulico



#### Peso

Alluminio (kg)	Ghisa (kg)
0,2	0,5

#### Esempio di ordinazione

**CBS 5 09 \***

Base singola: **CBS**

Figura CETOP: **5**

Tipo schema: **09**

Materiale:

**G** (ghisa GJL250 FOSFATATA)

**A** (alluminio EN AW-6026 LF NON anodizzata)

**B** (alluminio EN AW-6026 LF anodizzata BIANCO)

Altri materiali e trattamenti a richiesta

