

# CETOP5 - NG10

CETOP5 Single subplate with G1/2" P-T-A-B ports on back side

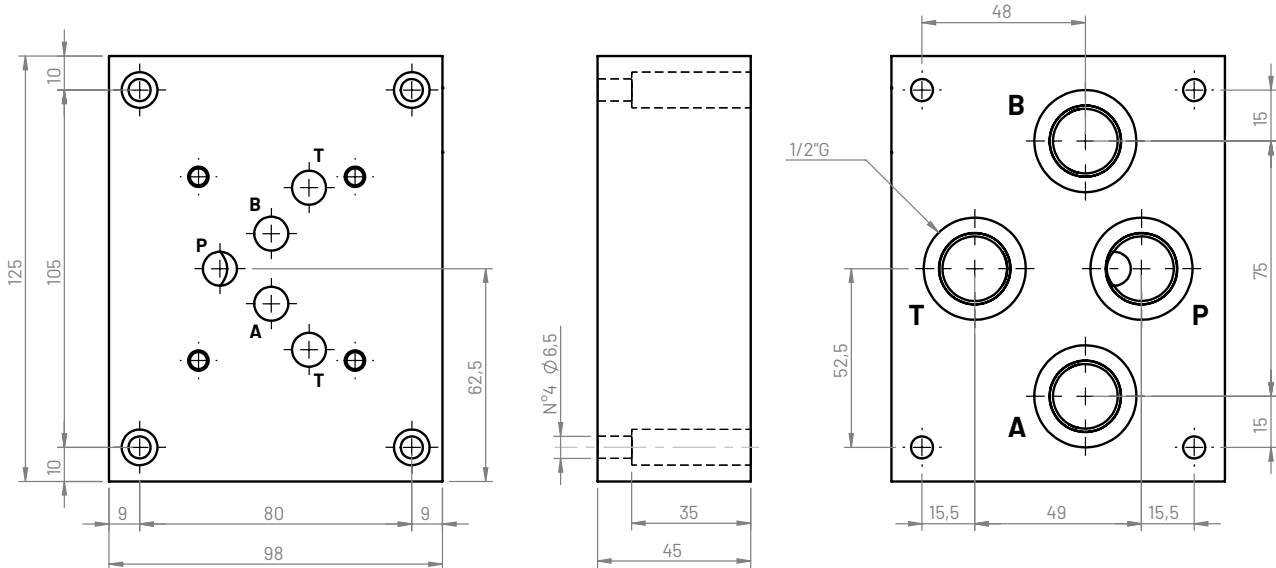
Type  
Model

# 500

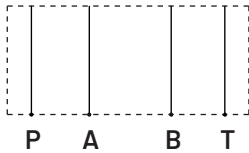
CBS500\*-4B

SINGLE  
SUBPLATE

4.2



### Hydraulic circuit



### Weight

Aluminum (kg)	Cast iron (kg)
1,4	3,5

### Ordering code

**CBS 5 00 \* - 4 B**

Single subplate: **CBS**

Flange CETOP: **5**

Configuration type: **00**

Material:

**G** (Phosphated cast iron GJL250)

**A** (aluminum EN AW-6026 LF without anodization)

**B** (aluminum EN AW-6026 LF with neutral anodization)

**Other materials on demand**

Ports size:

**4** (P-T-A-B: 1/2G)

Ports position: **B** (back side)