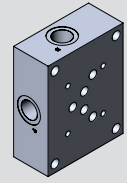


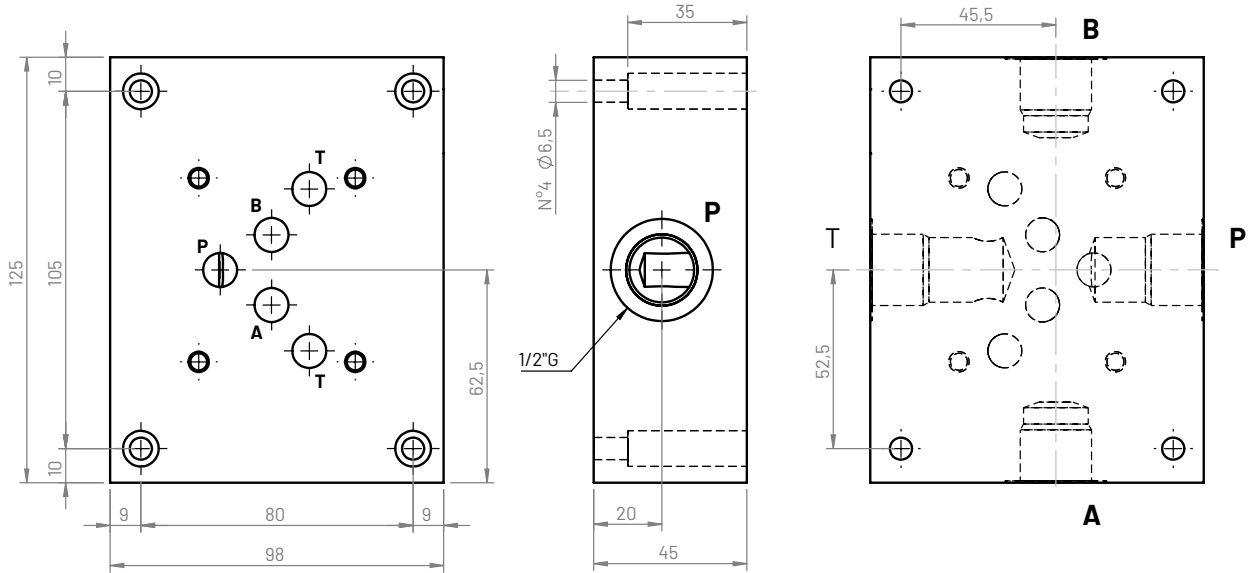
CETOP5 - NG10



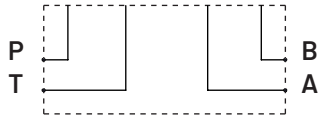
Type **500**
Model **CBS500*-4C**

CETOP5 Single subplate with 1/2"G P-T ports on long side and A-B ports on short side

4.3



Hydraulic circuit



Weight

Aluminum (kg)	Cast iron (kg)
1,4	3,5

Ordering code

CBS 5 00 * - 4 C

Single subplate: **CBS**

Flange CETOP: **5**

Configuration type: **00**

Material:

G (Phosphated cast iron GJL250)

A (aluminum EN AW-6026 LF without anodization)

B (aluminum EN AW-6026 LF with neutral anodization)

Other materials on demand

Ports size:

4 (P-T-A-B: 1/2G)

Ports position: **C** (lateral side)