

CETOP5 Single subplate with G3/4" P-T ports on back side and A-B on long side

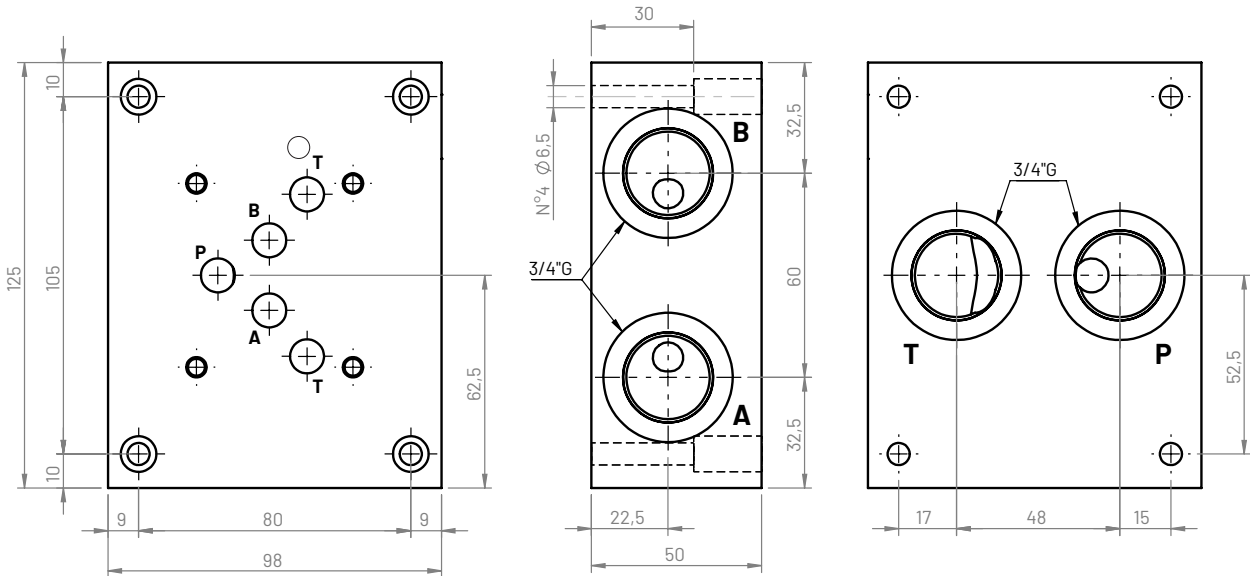
Type
Model

CETOP5 - NG10

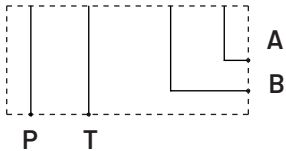
501
CBS501*-6A

SINGLE
SUBPLATE

4.4



Hydraulic circuit



Weight

Aluminum (kg)	Cast iron (kg)
1,5	3,8

Ordering code

CBS 5 01 * - 6 A

Single subplate: **CBS**

Flange CETOP: **5**

Configuration type: **01**

Material:

G (Phosphated cast iron GJL250)

A (aluminum EN AW-6026 LF without anodization)

B (aluminum EN AW-6026 LF with neutral anodization)

Other materials on demand

Ports size:

6 (P-T-A-B: 3/4G)

Ports position: **A** (back and lateral side)