

CETOP5 Single subplate with G3/4" P-T ports on long side and A-B ports on short side

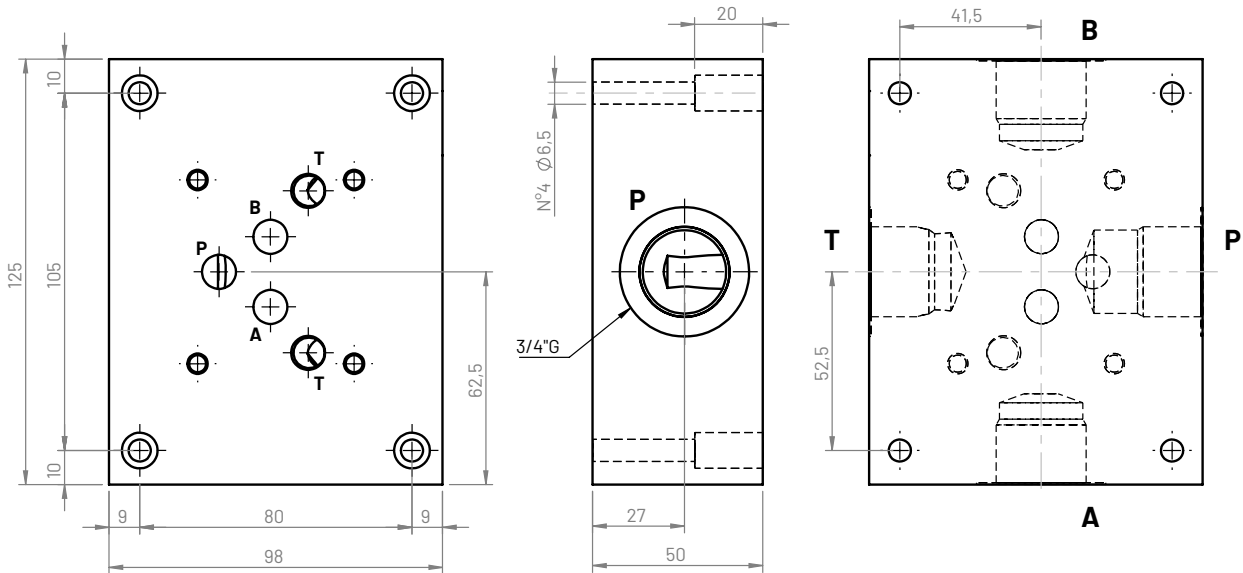
Type
Model

CETOP5 - NG10

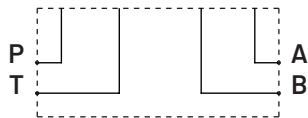
501
CBS501*-6C

SINGLE
SUBPLATE

4.6



Hydraulic circuit



Weight

Aluminum (kg)	Cast iron (kg)
1,5	3,8

Ordering code

