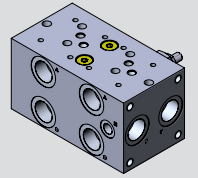


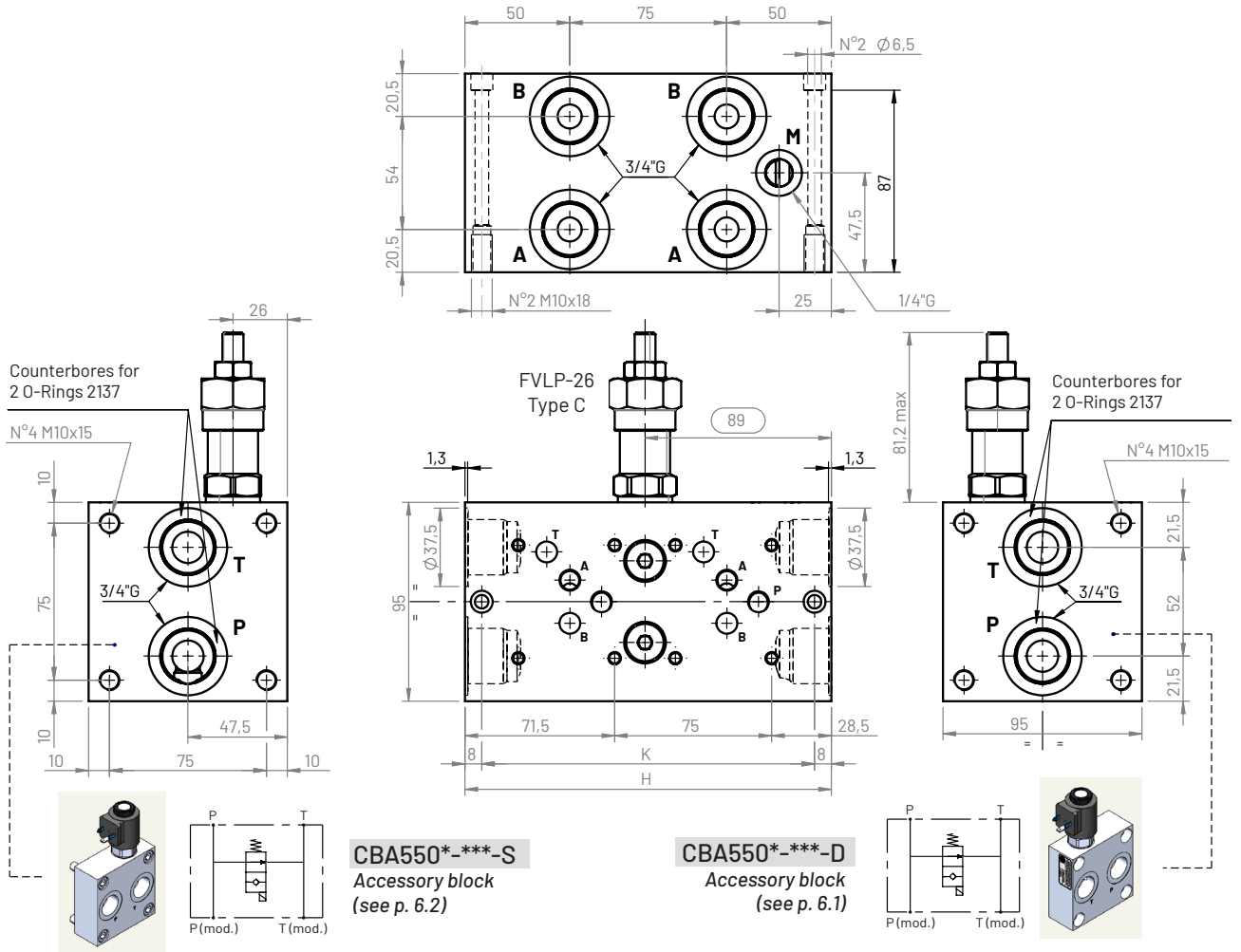
CETOP5 - NG10

Type **522**  
 Model **CMB522\*-P\*-6C-\*\*C**

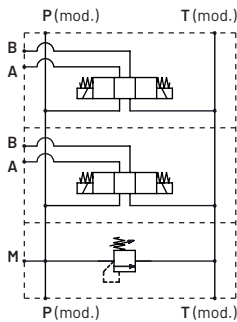
CETOP5 Monoblock with 3/4"G P-T ports on short sides and A-B ports on long sides.  
**Parallel version, with relief valve (FVLP-26)**



5.10



Hydraulic circuit



Positions	H (mm)	K (mm)	Aluminum (kg)	Cast iron (kg)
2	175	159	4,2	10,2
3	250	234	5,9	14,6
4	325	309	7,6	19
5	400	384	9,3	23,4
6	475	459	11	27,8

Ordering code **CMB 5 22 \* - P \* - 6 C - \* \* C**

Monoblock: **CMB**  
 Flange CETOP: **5**  
 Configuration type: **22**  
 Material:  
**G** (Phosphated cast iron GJL250)  
**A** (aluminum EN AW-6026 LF without anodization)  
**B** (aluminum EN AW-6026 LF with neutral anodization)  
**Other materials on demand**  
 Connection: **P** (parallel)  
 Positions: **2, 3, ..., 6**  
 Ports size:  
**6** (P-T: 3/4G - A-B: 3/4G)  
 Ports position: **C** (lateral side)  
 Cavity FVLP-26:  
**V** (included) technical info → p. 7.2 **T** (with cavity plugged)  
**L** (with cavity open)  
 Spring set (omit with L-T present):  
**W**: 5-50 bar **X**: 30-100 bar  
**J**: 80-250 bar **K**: 140-350 bar  
 Adjustment (omit with L-T present):  
**C** (with screw)