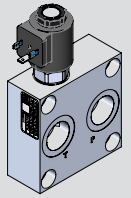


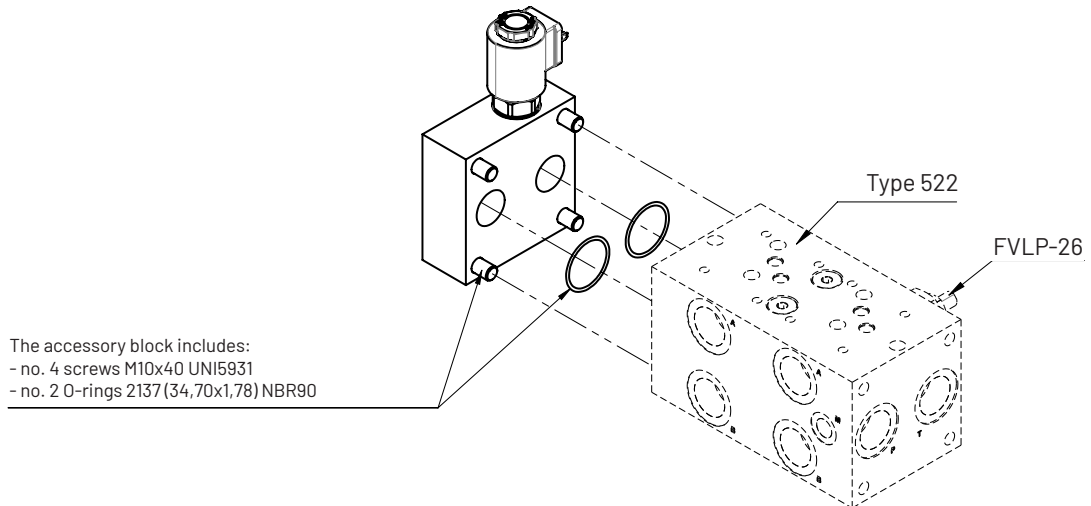
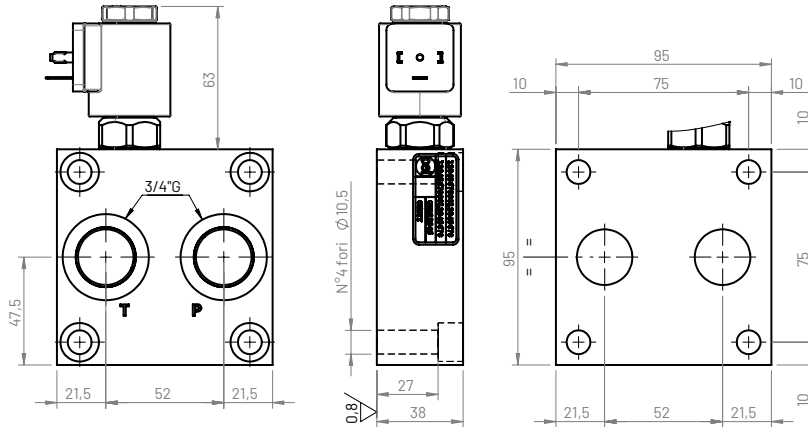
# CETOP5 - NG10

Type  
Model  
**550**  
**CBA550\*-\*\*\*-D**

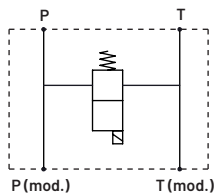
CETOP5 Right side accessory block  
with solenoid valve (FVEC-10)  
for CETOP5 modular systems



## 6.1



### Hydraulic circuit



### Weight

Aluminum (kg)	Cast iron (kg)
1,2	2,4

### Ordering code

Single subplate: **CBA**  
Flange CETOP: **5**  
Configuration type: **50**

Material:

- G** (Phosphated cast iron GJL250)
- A** (aluminum EN AW-6026 LF without anodization)
- B** (aluminum EN AW-6026 LF with neutral anodization)
- Other materials on demand**

FVEC-10 present:  
**V** (included) info tecniche → p.8.2  
**L** (with cavity open)  
**T** (with cavity plugged)

FVEC-10 type (omit with L-T present)  
**A** (normally open)  
**C** (normally closed)

Coil type (omit with L-T present):  
**A** (no coil)  
**B** (with coil 12Vdc)  
**C** (with coil 24Vdc)

Position: **D** (right side)

**CBA 5 50 \* - \* \* - D**