

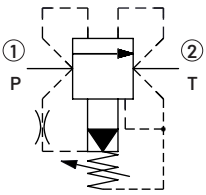
Relief valve, pilot operated spool type pressure compensated (VSP-CC-150 Bosch Rexroth)

Type

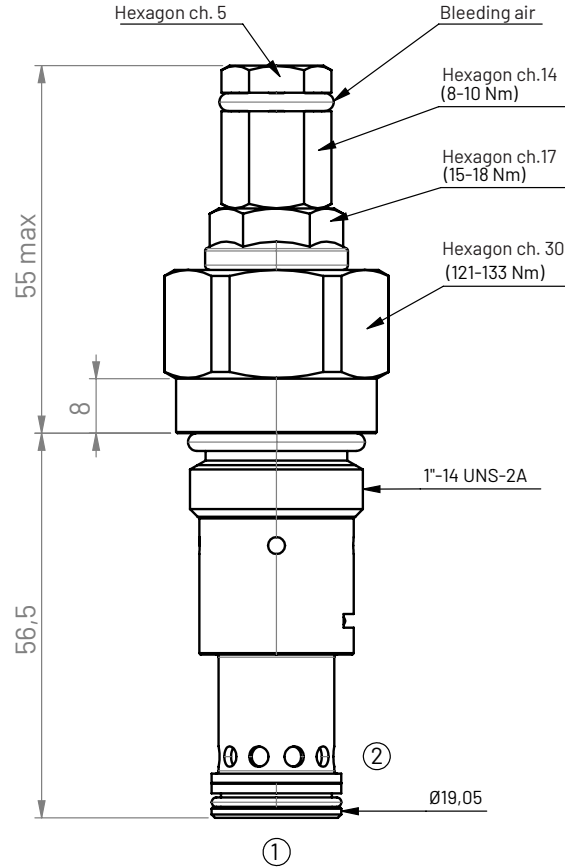
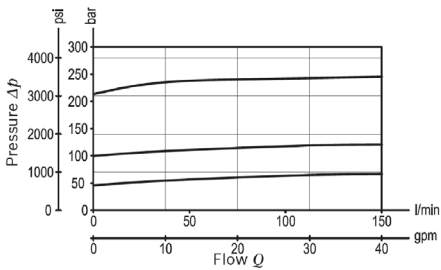
RELIEFE VALVES

FVLP-33

Hydraulic circuit



Characteristic curve



Technical characteristics

Max working pressure port 1(P)	420 bar
Max working pressure port 2(T)	140 bar
Max flowrate	150 l/min
Internal leakage (*)	100 cm ³ /min
Working fluid temperature	-30 / +100 °C
Torque	121÷133 Nm
Weight	0,28 kg
Cavity	C33 (see p. 20.4)
Cavity plug	FVTA33000000 (see p. 10.3)
Fluid	mineral or synthetic base with lubricating properties, viscosity between 10 and 500 cSt
Degree of fluid contamination	Max. nominal value max. 10 µm (NAS 8) ISO 4406 19/17/14

(*) Measured at 200 bar