

Base singola intermedia CETOP5
con filettature M10x1 su P-T-A-B

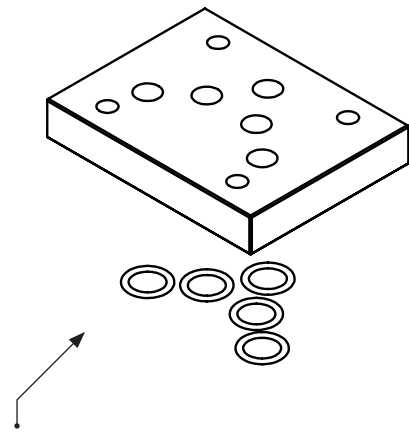
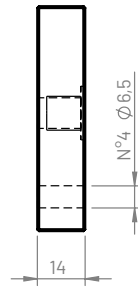
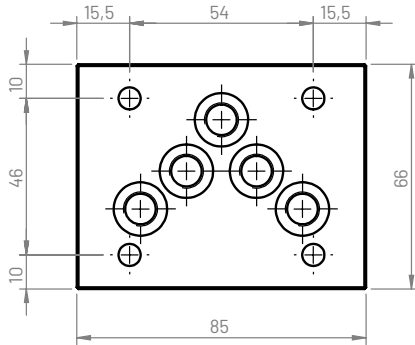
Modello
Tipo

CETOP5 - NG10

509
CBS509*

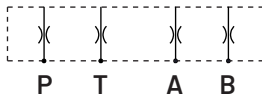
BASE
SINGOLA

4.17



La base singola viene fornita completa di:
- n°5 O-Ring 2050 (12,42x1,78) NBR90

Schema idraulico



Peso

Alluminio (kg)	Ghisa (kg)
0,2	0,5

Esempio di ordinazione

CBS 5 09 *

Base singola: **CBS**

Figura CETOP: **5**

Tipo schema: **09**

Materiale:

G (ghisa GJL250 FOSFATATA)

A (alluminio EN AW-6026 LF NON anodizzata)

B (alluminio EN AW-6026 LF anodizzata BIANCO)

Altri materiali e trattamenti a richiesta

