



Bobina D36 classe H 20W (Bosch Rexroth)

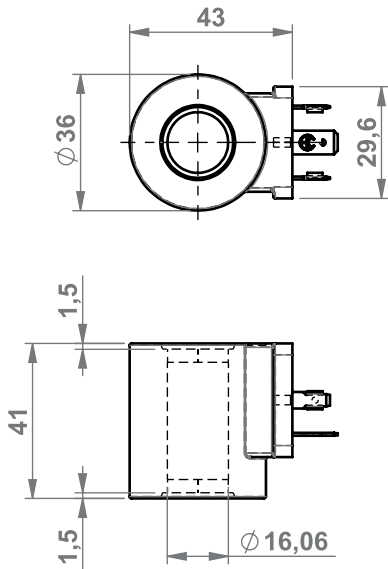
Modello **BOBINE**
Tipo **FVBB-36**

BOBINE

9.1

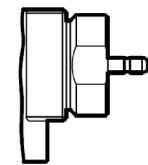
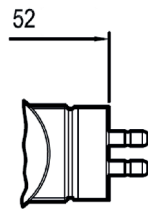
Standard

DIN43650
ISO4400

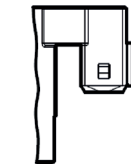
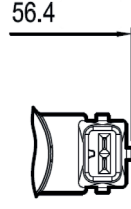


A richiesta

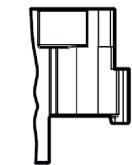
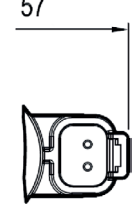
Kostal
M27x1



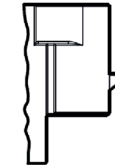
AMP
Junior H



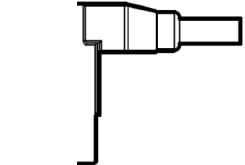
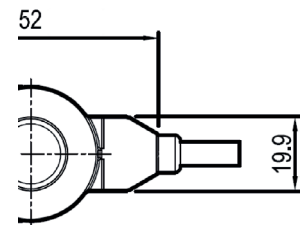
Deutsch
DT04-2P-V



AMP
Superseal-V



Cavo singolo
Ø6,3 L=300



Caratteristiche tecniche

Generali			
Peso	0,18 kg		
Temperatura di esercizio ambiente	-30 / +90 °C		
Grado di protezione	IP65	Attacco DIN43650 - ISO4400 Attacco Kostal M27x1 Cavo singolo Ø6,3 L=300	
	IP67	Attacco AMP Junior H	
	IP69K	Attacco Deutsch DT04-2P-V Attacco AMP Superseal-V	
Elettriche			
Tensione	Nominale	12Vdc	24Vdc
Resistenza (±7%)	a T = 20°C	7,4 Ohm	28,4 Ohm
Potenza		20 W	20 W
Corrente	I max.	1,67 A	0,83 A
	I Nom.	1,04 A	0,54 A